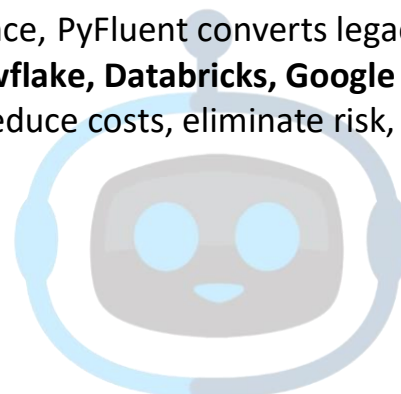


PyFluent Platform Overview

Pyfluent is the industry's first fully on-premise, parser-driven legacy code migration and transformation platform. Originally designed for SAS modernization, PyFluent has evolved into a comprehensive enterprise solution supporting large-scale code and ETL migrations across **SAS, IBM DataStage, Teradata BTEQ, Alteryx, Informatica, Qlik/Talend**, and more.

With unmatched automation, security, and performance, PyFluent converts legacy code into scalable, cloud-native formats optimized for **Snowflake, Databricks, Google BigQuery, Azure Fabric, Redshift, and DBT** helping enterprises reduce costs, eliminate risk, and accelerate time-to-cloud.



What Makes PyFluent Different

End-to-End AI Harness state-of-the-art generative AI to power your entire migration lifecycle. From intelligent analysis through adaptive conversion, automated validation, and end-to-end optimization, every step is seamless, self-learning, and fully auditable.

Secure On-Premise Deployment Fully containerized; deploy in your VPC, data center, or behind your firewall. Nothing leaves your environment.

Multi-Platform Support Migrate from **SAS, DataStage, BTEQ, Alteryx, Informatica, Oracle ODI**, and more.

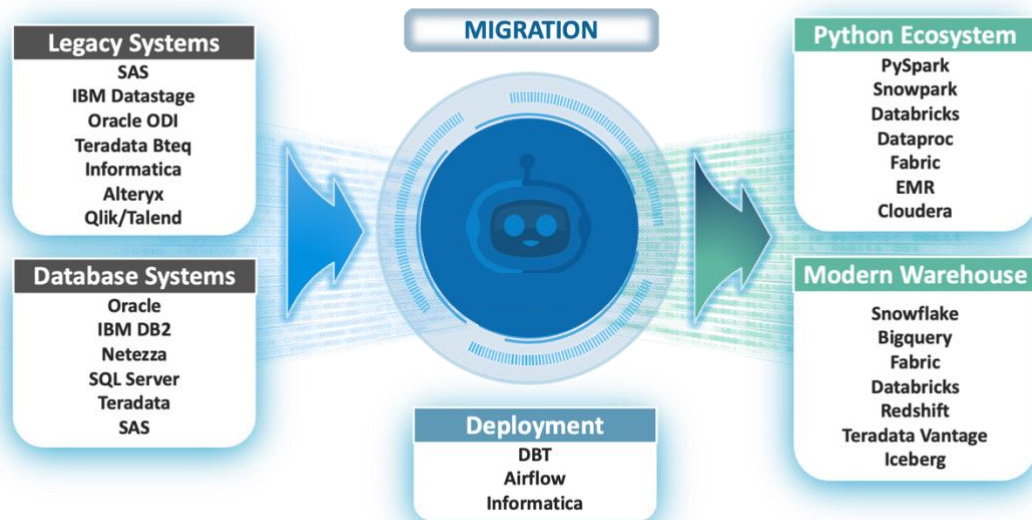
Built-In Execution Layer Visually execute converted code in **Snowflake, Databricks** clusters as well and many others.

AI Developer Assistant-Merlin AI offers real-time guidance, debugging, and optimization during and post-migration.

Full Validation and Data Matching Guarantee consistency of logic and data before, during, and after migration.



Legacy Systems/Database Systems/Python Ecosystem/Modern Warehouse/Deployment



Simply upload or connect to file folders

1. Analyze **Out-of-the-box**

- Inventories legacy systems, ETL workflows, and codebases
- Automatically maps dependencies across SAS, DataStage, Alteryx, etc.
- Prioritizes migration sequences and creates resource timelines

2. Convert **Out-of-the-box**

- High-speed, parser-based translation of SAS, BTEQ, Informatica, and more
- Converts code logic into modular, modern, PEP8-compliant formats
- Preserves macros, metadata, and ETL logic with minimal refactoring

3. Validate

- Tests logical equivalence across platforms
- Validates schema, data types, structure, and results
- Supports row-level and aggregate comparison

4. Execute

- Execute transformed pipelines directly in Snowflake, Databricks & more
- Visual workflow control for job packaging, scheduling, and debugging
- DAG interface and versioning support included

5. Data Matching

- Compare source and target data for metric and structure alignment
- Partition-based validation (e.g., by date, region, customer)
- Automated reconciliation of schema and formats

Automated Schema Mapping

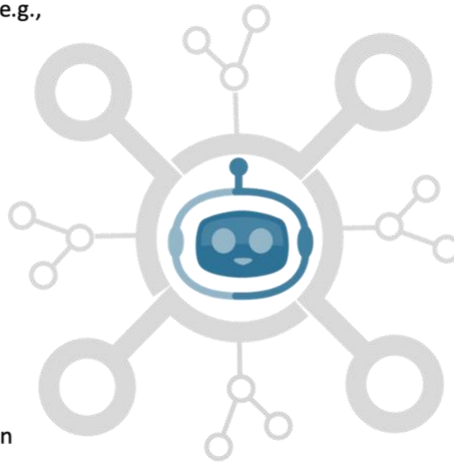
Automatically maps source schemas (e.g., **SAS, Oracle, Teradata**) to the target system for fast and efficient setup.

Metadata Comparison

Compares metadata (e.g., **table structures, indexes**) between the source and target systems to ensure complete structural alignment.

Data Type Validation

Ensures accurate translation of column types (e.g., numeric, string, date) into formats compatible with the target system, eliminating type mismatches.



Metrics Comparison

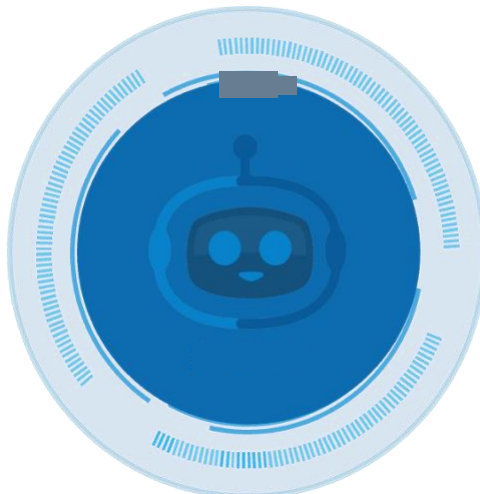
Validates key metrics (**counts, sums, averages**, etc.) between source and target systems to confirm data accuracy.

Partitioned Validation

Performs aggregate checks by **partitions** (e.g., **date, region**) to ensure data consistency within subsets.

6. Document

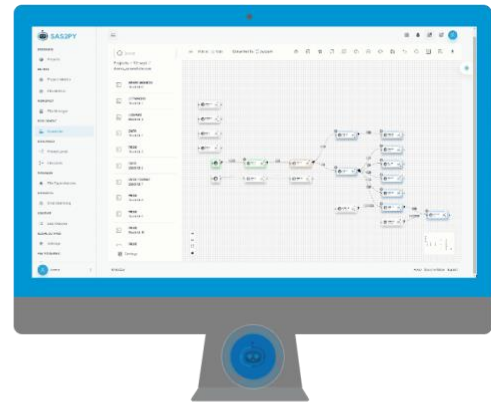
- Auto-generates migration reports, inline code comments, and lineage maps
- Preserves legacy code view for audits and rollback



7. Code/Data Lineage

End-to-End Code Lineage: SAS2PY automatically maps dependencies across all workflows, ensuring **100% traceability** before, during, and after migration.

Clickable Lineage Exploration: Users can **click on any dataset, transformation, or script** to immediately view the original code alongside its migrated equivalent.



Legacy Code Preservation & Full Auditability: Every **original script** remains **fully viewable, traceable, and auditable**, ensuring **long-term historical reference and compliance validation**.

Merlin AI – The Developer Assistant

Merlin AI is a GenAI developer assistant for developers and data engineers working with migrated code. Built directly into the PyFluent platform, Merlin supports:

- Real-time debugging and transformation assistance
- Auto-rewrite of SQL and Python blocks for optimization
- Error tracebacks, logic flow explanations, and quick fixes
- GenAI-enabled context-aware chat for specific code inquiries
- On-premise optional for security-sensitive environments

Enterprise-Grade Data Matching & Validation

PYFLUENT includes a powerful data validation engine to ensure consistency and trust throughout your migration:

- **Automated Schema Mapping:** Aligns source and target columns and formats
- **Data Type Normalization:** Ensures compatibility across platforms
- **Metadata Comparison:** Verifies structures, indexes, and dependencies
- **Metric Validation:** Confirms row counts, aggregates, and KPI accuracy
- **Partition-Level Checks:** Detects mismatches by date, region, or business slice

Deployment Options & Infrastructure

- Deploy within your infrastructure or in the cloud – you decide
- Docker-based delivery; compatible with AWS, Azure, GCP, on-prem VMs
- Standard Instances: AWS m5.2xlarge, Azure D8s v3, GCP n2-standard-8
- No data or logic ever leaves your environment

Licensing & Engagement Options

- **Volume Pricing** Tiered by LoC (lines of code) and platforms migrated
- **Proof of Concept (PoC)** 4-week paid PoC
- **Partner-Friendly** We work with many SI's, technology partners and cloud migration partners

Take the Next Step in Digital Transformation

PyFluent is the world's most secure, flexible, and automated legacy modernization platform built to meet the needs of large enterprises across regulated, data-intensive industries. Whether modernizing legacy code, rebuilding ETL pipelines, or migrating entire platforms to the cloud, PyFluent accelerates your path forward while reducing risk and cost.

Schedule a Demo: www.pyfluent.ai

